

WR - Net Molded Guide Ring - M1005

A product of MFP Seals.

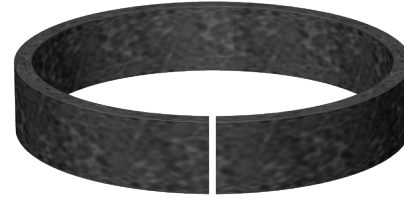
MFPSEALS
www.mfpseals.com

WR - M1005 - NM

WR - M1005 NET MOLDED GUIDE RINGS

MFP Seals' M1005 Net Molded Guide Rings are made from glass-reinforced nylon. These guide rings eliminate metal to metal contact and the consequent galling and scoring of cylinder bores. Guide rings are supplied available butt cut, for easy installation.

For sizes not listed please contact your MFP Seals' Sales Representative.

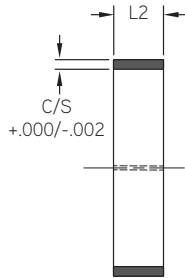


MFP PART NUMBER

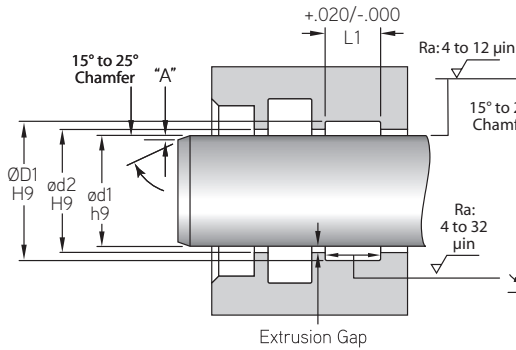
WR01250X250M1005-NM

SEAL TYPE ØD1 L2 COMPOUND NET MOLD

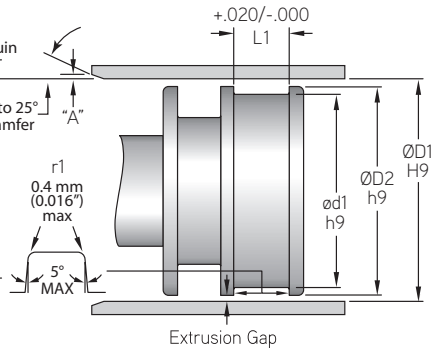
PROFILE



ROD APPLICATION



PISTON APPLICATION



Max. Velocity: 2.2 m/s (7.2 ft./s)

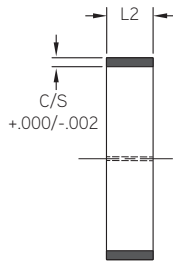
MFP PART NUMBER	ROD OR PISTON APPLICATION						
	ØD1	ØD2	Ød1	ØD2	L1	L2	C/S
TOLERANCE	H9	H9	h9	h9	+0.020/-0.000		+0.000/-0.002
WR01250X250M1005-NM	1.250	1.233	1.000	1.017	0.260	0.250	0.125
WR01250X375M1005-NM	1.250	1.233	1.000	1.017	0.385	0.375	0.125
WR01250X1000M1005-NM	1.250	1.233	1.000	1.017	1.010	1.000	0.125
WR01500X250M1005-NM	1.500	1.483	1.250	1.267	0.260	0.250	0.125
WR01500X375M1005-NM	1.500	1.483	1.250	1.267	0.385	0.375	0.125
WR01500X500M1005-NM	1.500	1.483	1.250	1.267	0.510	0.500	0.125
WR01750X1000M1005-NM	1.750	1.733	1.500	1.517	1.010	1.000	0.125
WR01750X375M1005-NM	1.750	1.733	1.500	1.517	0.385	0.375	0.125
WR01750X500M1005-NM	1.750	1.733	1.500	1.517	0.510	0.500	0.125
WR01750X750M1005-NM	1.750	1.733	1.500	1.517	0.760	0.750	0.125
WR01875X375M1005-NM	1.875	1.858	1.625	1.642	0.385	0.375	0.125
WR01875X500M1005-NM	1.875	1.858	1.625	1.642	0.510	0.500	0.125
WR01875X750M1005-NM	1.875	1.858	1.625	1.642	0.760	0.750	0.125
WR02000X250M1005-NM	2.000	1.983	1.750	1.767	0.260	0.250	0.125
WR02000X375M1005-NM	2.000	1.983	1.750	1.767	0.385	0.375	0.125
WR02000X500M1005-NM	2.000	1.983	1.750	1.767	0.510	0.500	0.125
WR02000X625M1005-NM	2.000	1.983	1.750	1.767	0.635	0.625	0.125
WR02000X750M1005-NM	2.000	1.983	1.750	1.767	0.760	0.750	0.125

Compound information available on pages 20-37.

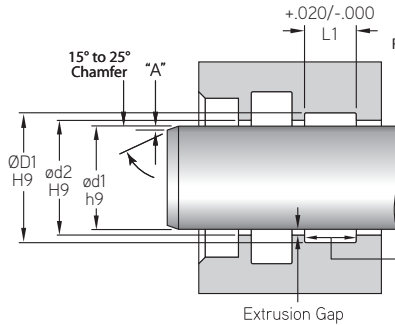
Surface Finish: ISO 4287 & Chamfer Information on pages 7-9. For ISO tolerance charts, refer to pages 12-13.

WEAR RINGS

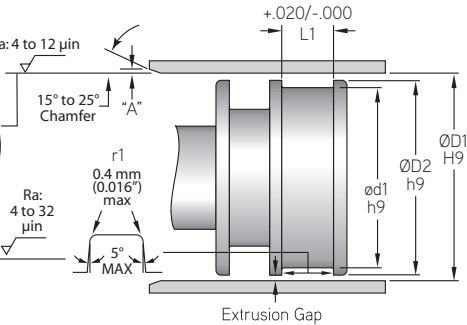
PROFILE



ROD APPLICATION



PISTON APPLICATION



WR - M1005 - NM

ROD OR PISTON APPLICATION

MFP PART NUMBER	ROD OR PISTON APPLICATION				L1	L2	C/S
	ØD1	ød2	ød1	ØD2			
TOLERANCE	H9	H9	h9	h9	+0.020/-0.000		+0.000/-0.002
WR02125X375M1005-NM	2.125	2.108	1.875	1.892	0.385	0.375	0.125
WR02125X750M1005-NM	2.125	2.108	1.875	1.892	0.760	0.750	0.125
WR02250X250M1005-NM	2.250	2.233	2.000	2.017	0.260	0.250	0.125
WR02250X375M1005-NM	2.250	2.233	2.000	2.017	0.385	0.375	0.125
WR02250X500M1005-NM	2.250	2.233	2.000	2.017	0.510	0.500	0.125
WR02250X625M1005-NM	2.250	2.233	2.000	2.017	0.635	0.625	0.125
WR02250X750M1005-NM	2.250	2.233	2.000	2.017	0.760	0.750	0.125
WR02375X500M1005-NM	2.375	2.358	2.125	2.142	0.510	0.500	0.125
WR02375X750M1005-NM	2.375	2.358	2.125	2.142	0.760	0.750	0.125
WR02500X250M1005-NM	2.500	2.483	2.250	2.267	0.260	0.250	0.125
WR02500X375M1005-NM	2.500	2.483	2.250	2.267	0.385	0.375	0.125
WR02500X500M1005-NM	2.500	2.483	2.250	2.267	0.510	0.500	0.125
WR02500X625M1005-NM	2.500	2.483	2.250	2.267	0.635	0.625	0.125
WR02500X750M1005-NM	2.500	2.483	2.250	2.267	0.760	0.750	0.125
WR02500X1000M1005-NM	2.500	2.483	2.250	2.267	1.010	1.000	0.125
WR02750X250M1005-NM	2.750	2.733	2.500	2.517	0.260	0.250	0.125
WR02750X375M1005-NM	2.750	2.733	2.500	2.517	0.385	0.375	0.125
WR02750X500M1005-NM	2.750	2.733	2.500	2.517	0.510	0.500	0.125
WR02750X625M1005-NM	2.750	2.733	2.500	2.517	0.635	0.625	0.125
WR02750X750M1005-NM	2.750	2.733	2.500	2.517	0.760	0.750	0.125
WR02750X1000M1005-NM	2.750	2.733	2.500	2.517	1.010	1.000	0.125
WR02875X1000M1005-NM	2.875	2.858	2.625	2.642	1.010	1.000	0.125
WR03000X250M1005-NM	3.000	2.983	2.750	2.767	0.260	0.250	0.125
WR03000X375M1005-NM	3.000	2.983	2.750	2.767	0.385	0.375	0.125
WR03000X500M1005-NM	3.000	2.983	2.750	2.767	0.510	0.500	0.125
WR03000X625M1005-NM	3.000	2.983	2.750	2.767	0.635	0.625	0.125
WR03000X750M1005-NM	3.000	2.983	2.750	2.767	0.760	0.750	0.125
WR03000X1000M1005-NM	3.000	2.983	2.750	2.767	1.010	1.000	0.125
WR03125X500M1005-NM	3.125	3.108	2.875	2.892	0.510	0.500	0.125
WR03250X250M1005-NM	3.250	3.233	3.000	3.017	0.260	0.250	0.125
WR03250X312M1005-NM	3.250	3.233	3.000	3.017	0.322	0.312	0.125
WR03250X375M1005-NM	3.250	3.233	3.000	3.017	0.385	0.375	0.125
WR03250X500M1005-NM	3.250	3.233	3.000	3.017	0.510	0.500	0.125
WR03250X750M1005-NM	3.250	3.233	3.000	3.017	0.760	0.750	0.125

WEAR RINGS

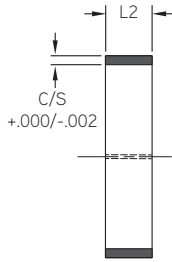
WR - Net Molded Guide Ring - M1005

A product of MFP Seals.

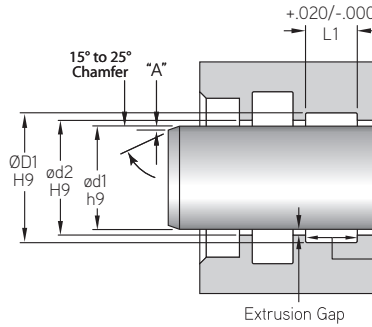
MFPSEALS
www.mfpseals.com

WR - M1005 - NM

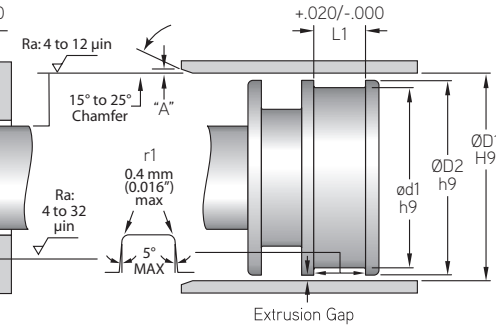
PROFILE



ROD APPLICATION



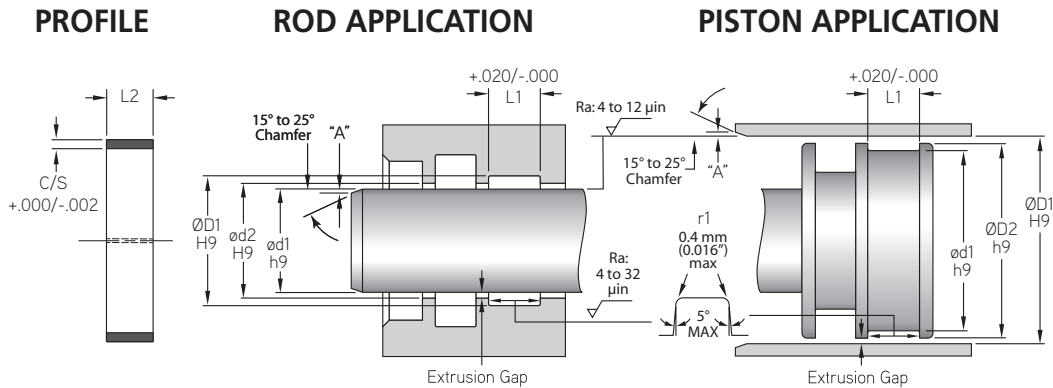
PISTON APPLICATION



ROD OR PISTON APPLICATION

MFP PART NUMBER	ROD OR PISTON APPLICATION				L1	L2	C/S
	ØD1	ød2	ød1	ØD2			
	H9	H9	h9	h9	+0.020/-0.000		+0.000/-0.002
WR03250X1000M1005-NM	3.250	3.233	3.000	3.017	1.010	1.000	0.125
WR03375X750M1005-NM	3.375	3.358	3.125	3.142	0.760	0.750	0.125
WR03500X250M1005-NM	3.500	3.483	3.250	3.267	0.260	0.250	0.125
WR03500X375M1005-NM	3.500	3.483	3.250	3.267	0.385	0.375	0.125
WR03500X500M1005-NM	3.500	3.483	3.250	3.267	0.510	0.500	0.125
WR03500X625M1005-NM	3.500	3.483	3.250	3.267	0.635	0.625	0.125
WR03500X750M1005-NM	3.500	3.483	3.250	3.267	0.760	0.750	0.125
WR03500X1000M1005-NM	3.500	3.483	3.250	3.267	1.010	1.000	0.125
WR03625X500M1005-NM	3.625	3.608	3.375	3.392	0.510	0.500	0.125
WR03625X1000M1005-NM	3.625	3.608	3.375	3.392	1.010	1.000	0.125
WR03750X250M1005-NM	3.750	3.733	3.500	3.517	0.260	0.250	0.125
WR03750X375M1005-NM	3.750	3.733	3.500	3.517	0.385	0.375	0.125
WR03750X500M1005-NM	3.750	3.733	3.500	3.517	0.510	0.500	0.125
WR03750X625M1005-NM	3.750	3.733	3.500	3.517	0.635	0.625	0.125
WR03750X750M1005-NM	3.750	3.733	3.500	3.517	0.760	0.750	0.125
WR03750X1000M1005-NM	3.750	3.733	3.500	3.517	1.010	1.000	0.125
WR04000X250M1005-NM	4.000	3.983	3.750	3.767	0.260	0.250	0.125
WR04000X375M1005-NM	4.000	3.983	3.750	3.767	0.385	0.375	0.125
WR04000X500M1005-NM	4.000	3.983	3.750	3.767	0.510	0.500	0.125
WR04000X625M1005-NM	4.000	3.983	3.750	3.767	0.635	0.625	0.125
WR04000X750M1005-NM	4.000	3.983	3.750	3.767	0.760	0.750	0.125
WR04000X1000M1005-NM	4.000	3.983	3.750	3.767	1.010	1.000	0.125
WR04250X375M1005-NM	4.250	4.233	4.000	4.017	0.385	0.375	0.125
WR04250X500M1005-NM	4.250	4.233	4.000	4.017	0.510	0.500	0.125
WR04250X625M1005-NM	4.250	4.233	4.000	4.017	0.635	0.625	0.125
WR04250X750M1005-NM	4.250	4.233	4.000	4.017	0.760	0.750	0.125
WR04250X1000M1005-NM	4.250	4.233	4.000	4.017	1.010	1.000	0.125
WR04500X375M1005-NM	4.500	4.483	4.250	4.267	0.385	0.375	0.125
WR04500X500M1005-NM	4.500	4.483	4.250	4.267	0.510	0.500	0.125
WR04500X625M1005-NM	4.500	4.483	4.250	4.267	0.635	0.625	0.125
WR04500X750M1005-NM	4.500	4.483	4.250	4.267	0.760	0.750	0.125
WR04500X1000M1005-NM	4.500	4.483	4.250	4.267	1.010	1.000	0.125
WR04750X375M1005-NM	4.750	4.733	4.500	4.517	0.385	0.375	0.125
WR04750X500M1005-NM	4.750	4.733	4.500	4.517	0.510	0.500	0.125

WEAR RINGS



MFP PART NUMBER	ROD OR PISTON APPLICATION						
	ØD1	ød2	ød1	ØD2	L1	L2	C/S
TOLERANCE	H9	H9	h9	h9	+0.020/-0.000		+0.000/-0.002
WR04750X750M1005-NM	4.750	4.733	4.500	4.517	0.760	0.750	0.125
WR04750X1000M1005-NM	4.750	4.733	4.500	4.517	1.010	1.000	0.125
WR05000X250M1005-NM	5.000	4.982	4.750	4.768	0.260	0.250	0.125
WR05000X375M1005-NM	5.000	4.982	4.750	4.768	0.385	0.375	0.125
WR05000X500M1005-NM	5.000	4.982	4.750	4.768	0.510	0.500	0.125
WR05000X625M1005-NM	5.000	4.982	4.750	4.768	0.635	0.625	0.125
WR05000X750M1005-NM	5.000	4.982	4.750	4.768	0.760	0.750	0.125
WR05000X1000M1005-NM	5.000	4.982	4.750	4.768	1.010	1.000	0.125
WR05250X500M1005-NM	5.250	5.232	5.000	5.018	0.510	0.500	0.125
WR05250X625M1005-NM	5.250	5.232	5.000	5.018	0.635	0.625	0.125
WR05250X750M1005-NM	5.250	5.232	5.000	5.018	0.760	0.750	0.125
WR05250X1000M1005-NM	5.250	5.232	5.000	5.018	1.010	1.000	0.125
WR05500X375M1005-NM	5.500	5.482	5.250	5.268	0.385	0.375	0.125
WR05500X500M1005-NM	5.500	5.482	5.250	5.268	0.510	0.500	0.125
WR05500X625M1005-NM	5.500	5.482	5.250	5.268	0.635	0.625	0.125
WR05500X750M1005-NM	5.500	5.482	5.250	5.268	0.760	0.750	0.125
WR05500X1000M1005-NM	5.500	5.482	5.250	5.268	1.010	1.000	0.125
WR05750X250M1005-NM	5.750	5.732	5.500	5.518	0.260	0.250	0.125
WR05750X500M1005-NM	5.750	5.732	5.500	5.518	0.510	0.500	0.125
WR05750X625M1005-NM	5.750	5.732	5.500	5.518	0.635	0.625	0.125
WR05750X750M1005-NM	5.750	5.732	5.500	5.518	0.760	0.750	0.125
WR05750X1000M1005-NM	5.750	5.732	5.500	5.518	1.010	1.000	0.125
WR06000X250M1005-NM	6.000	5.980	5.750	5.770	0.260	0.250	0.125
WR06000X500M1005-NM	6.000	5.980	5.750	5.770	0.510	0.500	0.125
WR06000X625M1005-NM	6.000	5.980	5.750	5.770	0.635	0.625	0.125
WR06000X750M1005-NM	6.000	5.980	5.750	5.770	0.760	0.750	0.125
WR06000X875M1005-NM	6.000	5.980	5.750	5.770	0.885	0.875	0.125
WR06000X1000M1005-NM	6.000	5.980	5.750	5.770	1.010	1.000	0.125