

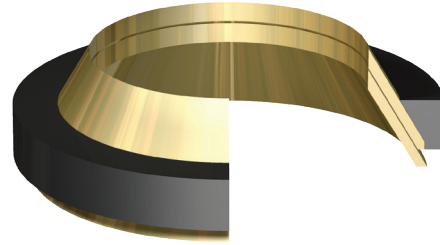


# Metallic Rod Scraper - S

A product of MFP Seals.

**MFPSEALS**  
www.mfpseals.com

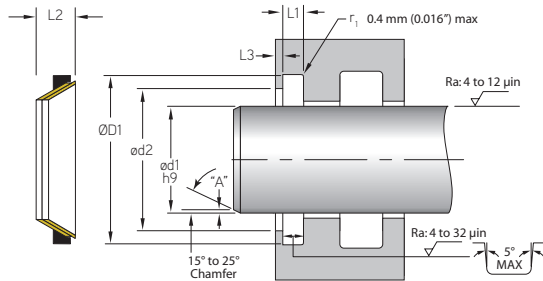
Light Duty



## METALLIC ROD SCRAPER - S

S - Metallic Rod Scrapers effectively remove contaminants from the rod surface, helping to prevent the intrusion of foreign materials, allowing packings to last longer and maintain a better seal. They are self-adjusting, low-friction, long-lasting and are simple to install.

Our S scraper is comprised of two flexible brass or bronze rings encased in a synthetic rubber cushion. The cushion ring helps absorb side loads while exerting an inward force to keep the metal scraping rings in contact with the rod surface.



## MFP PART NUMBER

**S-3435-0500-BN**

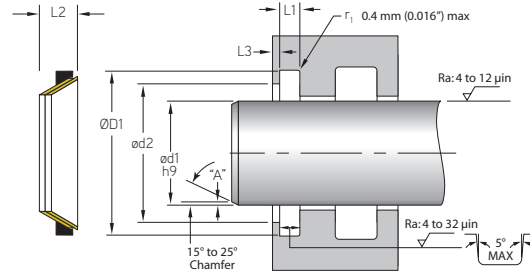
SEAL TYPE    SERIES    ROD    CUSHION MATERIAL

Cushion - FKM  
Scraper Rings - Brass or Bronze

ROD SCRAPERS

### SNAP-IN ROD APPLICATION

MFP PART NUMBER	ød1	ØD1	ød2	L1	L3
<b>.125" - GROOVE</b>	h9	+0.003/-0.003	+0.000/-0.010	+0.003/-0.001	+0.015/-0.000
S-3435-0500-BN	0.500	0.750	0.714	0.125	0.018
S-3435-0625-BN	0.625	0.875	0.839	0.125	0.018
S-3435-0750-BN	0.750	1.000	0.964	0.125	0.018
S-3435-1000-BN	1.000	1.250	1.214	0.125	0.018
<b>.187" - GROOVE</b>	h9	+0.003/-0.003	+0.000/-0.010	+0.003/-0.001	+0.015/-0.000
S-3436-0750-BN	0.750	1.125	1.082	0.187	0.022
S-3436-0875-BN	0.875	1.250	1.207	0.187	0.022
S-3436-1000-BN	1.000	1.375	1.332	0.187	0.022
S-3436-1125-BN	1.125	1.500	1.457	0.187	0.022
S-3436-1250-BN	1.250	1.625	1.582	0.187	0.022
S-3436-1375-BN	1.375	1.750	1.707	0.187	0.022
S-3436-1500-BN	1.500	1.875	1.832	0.187	0.022
S-3436-1625-BN	1.625	2.000	1.957	0.187	0.022
S-3436-1750-BN	1.750	2.125	2.082	0.187	0.022
S-3436-1875-BN	1.875	2.250	2.207	0.187	0.022
S-3436-2000-BN	2.000	2.375	2.332	0.187	0.022
S-3436-2125-BN	2.125	2.500	2.457	0.187	0.022
S-3436-2250-BN	2.250	2.625	2.582	0.187	0.022
S-3436-2500-BN	2.500	2.875	2.832	0.187	0.022



S

MFP PART NUMBER	SNAP-IN ROD APPLICATION				
	ød1	ØD1	ød2	L1	L3
<b>.250" - GROOVE</b>	h9	+0.003/-0.003	+0.000/-0.010	+0.003/-0.001	+0.015/-0.000
S-3437-2000-BN	2.000	2.500	2.440	0.250	0.030
S-3437-2125-BN	2.125	2.625	2.565	0.250	0.030
S-3437-2250-BN	2.250	2.750	2.690	0.250	0.030
S-3437-2500-BN	2.500	3.000	2.940	0.250	0.030
S-3437-2750-BN	2.750	3.250	3.190	0.250	0.030
S-3437-2875-BN	2.875	3.375	3.315	0.250	0.030
S-3437-3000-BN	3.000	3.500	3.440	0.250	0.030
S-3437-3250-BN	3.250	3.750	3.690	0.250	0.030
S-3437-3500-BN	3.500	4.000	3.940	0.250	0.030
S-3437-4000-BN	4.000	4.500	4.440	0.250	0.030
S-3437-4250-BN	4.250	4.750	4.690	0.250	0.030
<b>.375" - GROOVE</b>	h9	+0.003/-0.003	+0.000/-0.010	+0.003/-0.001	+0.015/-0.000
S-3438-4500-BN	4.500	5.250	5.160	0.375	0.045
S-3438-5000-BN	5.000	5.750	5.660	0.375	0.045
S-3438-5500-BN	5.500	6.250	6.160	0.375	0.045
S-3438-6000-BN	6.000	6.750	6.660	0.375	0.045

ROD SCRAPERS