

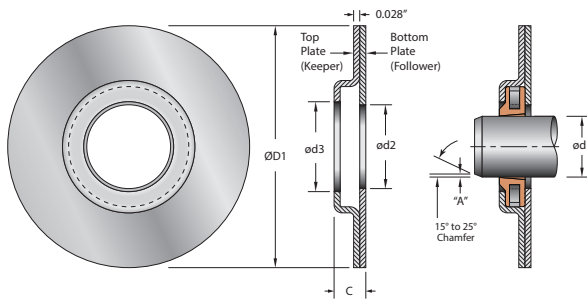
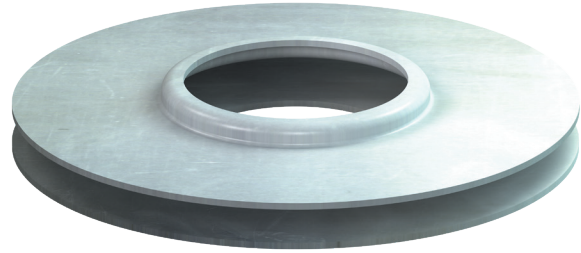


AD - ADAPTER

HYDROWYPE

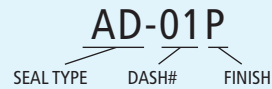
AD - ADAPTER

Standard AD-Series adapters are comprised of a Keeper (top) and Follower (bottom) plate with a built-in "groove" design to retain and A-Series or AI-Series wiper. The adapter is usually affixed to the end-cap or gland by means of machine screws or bolts, often time utilizing an existing bolt pattern for the gland. Typically manufactured of 22 gauge mild steel (0.028 inch) and coated/plated, adapters may be supplied with or without a customers bolt pattern of holes punched into the flange.



Scrapers are typically held in place by a Keeper/Follower plate or Retaining Ring.

HYDROWYPE PART NUMBER



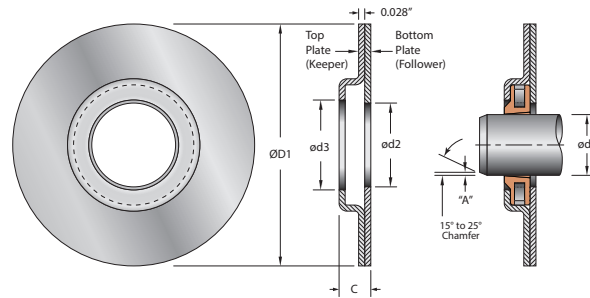
FINISH DESIGNATION

- B = UNFINISHED*
- N = NICKEL
- P = PRIMED (Standard)
- Z = ZINC

*Unfinished parts are susceptible to oxidation and should not be stored for long periods without appropriate treatment. Parts will be shipped in plastic bags with light coating of machine oil to prevent corrosion.

ROD SCRAPERS

PART NUMBER	ROD APPLICATION				
	ød1 (ROD)	ØD1	ød2	ød3	C
AD-01	0.500	2.000	0.510	0.637	0.136
AD-02	0.563	2.000	0.572	0.700	0.136
AD-03	0.625	2.000	0.635	0.762	0.136
AD-04	0.688	2.250	0.697	0.824	0.136
AD-05	0.750	2.250	0.760	0.887	0.136
AD-06	0.813	2.250	0.822	0.939	0.136
AD-07	0.875	2.500	0.885	1.002	0.136
AD-08	0.938	2.500	0.947	1.064	0.136
AD-09	1.000	2.500	1.010	1.126	0.136
AD-10	1.063	2.625	1.072	1.189	0.136
AD-11	1.125	2.625	1.135	1.252	0.136
AD-12	1.188	2.625	1.197	1.310	0.136
AD-13	1.250	2.875	1.260	1.376	0.136
AD-14	1.313	2.875	1.322	1.470	0.136
AD-15	1.375	2.875	1.385	1.532	0.136
AD-16	1.438	3.125	1.447	1.595	0.136
AD-17	1.500	3.125	1.510	1.658	0.136
AD-18	1.625	3.125	1.635	1.783	0.136
AD-19	1.750	3.375	1.760	1.908	0.136
AD-20	1.875	3.375	1.885	2.033	0.136
AD-21	2.000	3.750	2.010	2.158	0.136
AD-22	2.125	3.750	2.135	2.283	0.136
AD-23	2.250	3.750	2.260	2.408	0.136
AD-24	2.375	4.250	2.385	2.533	0.136



AD - ADAPTER

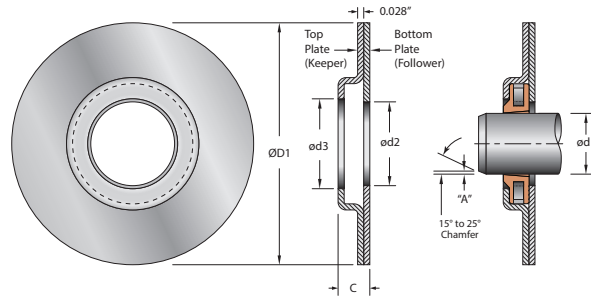
PART NUMBER	ROD APPLICATION				
	ød1 (ROD)	ØD1	ød2	ød3	C
AD-25	2.500	4.250	2.600	2.658	0.136
AD-26	2.625	4.250	2.635	2.814	0.151
AD-27	2.750	4.500	2.760	2.939	0.151
AD-28	2.875	4.500	2.885	3.064	0.151
AD-29	3.000	4.500	3.010	3.189	0.151
AD-30	3.125	5.000	3.135	3.314	0.151
AD-31	3.250	5.000	3.260	3.439	0.151
AD-32	3.375	5.000	3.385	3.564	0.151
AD-33	3.500	5.312	3.510	3.689	0.151
AD-34	3.625	5.312	3.635	3.814	0.151
AD-35	3.750	5.312	3.760	3.939	0.151
AD-36	3.875	5.750	3.865	4.064	0.151
AD-37	4.000	5.750	4.010	4.220	0.167
AD-38	4.125	5.750	4.135	4.345	0.167
AD-39	4.250	6.125	4.260	4.470	0.167
AD-40	4.375	6.125	4.385	4.595	0.167
AD-41	4.500	6.125	4.510	4.720	0.167
AD-42	4.625	6.500	4.635	4.845	0.167
AD-43	4.750	6.500	4.760	4.970	0.167
AD-44	4.875	6.500	4.885	5.095	0.167
AD-45	5.000	6.875	5.010	5.220	0.167
AD-46	5.125	6.875	5.135	5.345	0.167
AD-47	5.250	6.875	5.260	5.470	0.167
AD-48	5.375	7.375	5.385	5.595	0.167
AD-49	5.500	7.375	5.510	5.720	0.167
AD-50	5.625	7.375	5.635	5.876	0.183
AD-51	5.750	7.750	5.760	6.002	0.183
AD-52	5.875	7.750	5.865	6.126	0.183
AD-53	6.000	7.750	6.010	6.252	0.183
AD-54	6.250	8.500	6.260	6.502	0.183
AD-55	6.500	8.500	6.510	6.752	0.183
AD-56	6.750	8.500	6.760	7.002	0.183
AD-57	7.000	9.250	7.010	7.252	0.183
AD-58	7.250	9.250	7.260	7.502	0.183
AD-59	7.500	9.250	7.510	7.752	0.183
AD-60	7.750	10.250	7.760	8.002	0.183

ROD SCRAPERS



AD - Adapter

AD - ADAPTER



PART NUMBER	ROD APPLICATION				
	ød1 (ROD)	ØD1	ød2	ød3	C
AD-61	8.000	10.250	8.010	8.252	0.183
AD-62	8.500	10.250	8.510	8.752	0.183
AD-63	9.000	11.750	9.010	9.252	0.183
AD-64	9.500	11.750	9.510	9.752	0.183
AD-65	10.000	11.750	10.010	10.252	0.183
AD-66	10.500	13.250	10.510	10.752	0.183
AD-67	11.000	13.250	11.010	11.252	0.183
AD-68	11.500	13.250	11.510	11.752	0.198
AD-69	12.000	14.750	12.010	12.252	0.198
AD-70	12.500	14.750	12.510	12.752	0.198
AD-71	13.000	14.750	13.010	13.252	0.198

ROD SCRAPERS