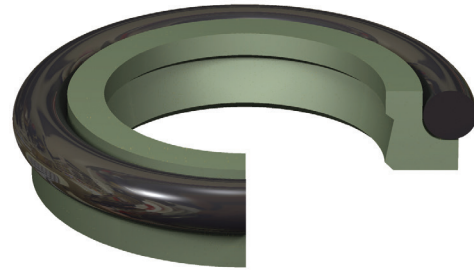


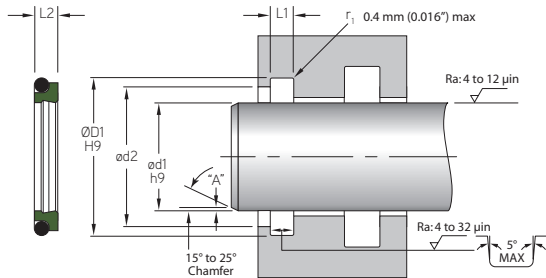


ODW STYLE ROD WIPER

ODW Style Rod Wipers are a two piece design, comprised of our T5100 filled PTFE seal and an O-Ring energizer. The ODW Style Rod Wiper is designed for use in light to medium duty hydraulic cylinders. They help prevent leakage in the primary rod seal by controlling excess fluid as the rod extends. Contamination is prevented from entering the cylinder by the outer sealing edge of the seal.



ODW STYLE



MFP PART NUMBER
ODW-0250X0T5100N

SEAL TYPE od1 COMPOUND O-Ring DASH # ENERGIZER COMPOUND

Max. Velocity: 1.5 m/s (5 ft./s)

MFP PART NUMBER	ROD APPLICATION				
	ød1	ØD1	L1	ød2	O-Ring Dash #
TOLERANCE	h9	H9	+0.008/-0.000	+0.003/-0.000	
ODW-0250X0T5100N	0.250	0.440	0.146	0.310	011
ODW-0312X0T5100N	0.312	0.503	0.146	0.373	012
ODW-0375X0T5100N	0.375	0.565	0.146	0.435	013
TOLERANCE	h9	H9	+0.008/-0.000	+0.004/-0.000	
ODW-0437X0T5100N	0.437	0.628	0.146	0.498	014
ODW-0500X0T5100N	0.500	0.690	0.146	0.560	015
ODW-0562X0T5100N	0.562	0.753	0.146	0.623	016
ODW-0625X0T5100N	0.625	0.815	0.146	0.685	017
ODW-0687X0T5100N	0.687	0.878	0.146	0.748	018
ODW-0750X0T5100N	0.750	0.940	0.146	0.810	019
ODW-0812X0T5100N	0.812	1.003	0.146	0.873	020
ODW-0875X0T5100N	0.875	1.065	0.146	0.935	021
ODW-0937X0T5100N	0.937	1.128	0.146	0.998	022
ODW-1000X0T5100N	1.000	1.190	0.146	1.060	023
ODW-0500X1T5100N	0.500	0.770	0.196	0.560	113
ODW-0562X1T5100N	0.562	0.833	0.196	0.623	114
ODW-0625X1T5100N	0.625	0.895	0.196	0.685	115
ODW-0687X1T5100N	0.687	0.958	0.196	0.748	116
ODW-0750X1T5100N	0.750	1.020	0.196	0.810	117
ODW-0812X1T5100N	0.812	1.083	0.196	0.873	118
ODW-0875X1T5100N	0.875	1.145	0.196	0.935	119
ODW-0937X1T5100N	0.937	1.208	0.196	0.998	120
ODW-1000X1T5100N	1.000	1.270	0.196	1.060	121
ODW-1062X1T5100N	1.062	1.333	0.196	1.123	122

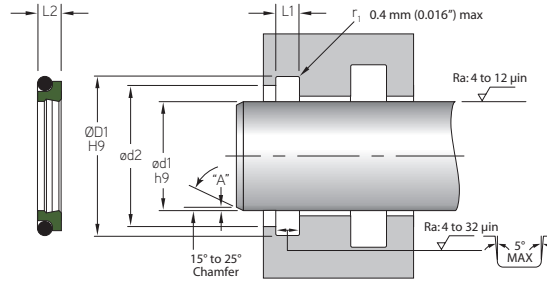
ROD WIPERS



ODW Style Rod Wiper

A product of MFP Seals.

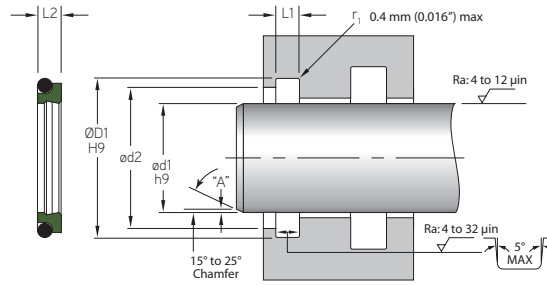
MFPSEALS
www.mfpseals.com



ODW STYLE

ROD WIPERS

MFP PART NUMBER	ROD APPLICATION				
	ød1	ØD1	L1	ød2	O-Ring Dash #
TOLERANCE	h9	H9	+0.008/-0.000	+0.004/-0.000	
ODW-1125X1T5100N	1.125	1.395	0.196	1.185	123
ODW-1187X1T5100N	1.187	1.458	0.196	1.248	124
ODW-1250X1T5100N	1.250	1.520	0.196	1.310	125
ODW-1312X1T5100N	1.312	1.583	0.196	1.373	126
ODW-1375X1T5100N	1.375	1.645	0.196	1.435	127
ODW-1437X1T5100N	1.437	1.708	0.196	1.498	128
ODW-1500X1T5100N	1.500	1.770	0.196	1.560	129
ODW-1562X1T5100N	1.562	1.833	0.196	1.623	130
ODW-1625X1T5100N	1.625	1.895	0.196	1.685	131
ODW-1687X1T5100N	1.687	1.958	0.196	1.748	132
ODW-1750X1T5100N	1.750	2.020	0.196	1.810	133
ODW-1812X1T5100N	1.812	2.083	0.196	1.873	134
ODW-1875X1T5100N	1.875	2.145	0.196	1.935	135
ODW-1937X1T5100N	1.937	2.208	0.196	1.998	136
TOLERANCE	h9	H9	+0.008/-0.000	+0.006/-0.000	
ODW-2000X1T5100N	2.000	2.270	0.196	2.060	137
ODW-2062X1T5100N	2.062	2.333	0.196	2.123	138
ODW-2125X1T5100N	2.125	2.395	0.196	2.185	139
ODW-2187X1T5100N	2.187	2.458	0.196	2.248	140
ODW-2250X1T5100N	2.250	2.520	0.196	2.310	141
ODW-2375X1T5100N	2.375	2.645	0.196	2.435	143
ODW-2500X1T5100N	2.500	2.770	0.196	2.560	145
ODW-2625X1T5100N	2.625	2.895	0.196	2.685	147
ODW-2750X1T5100N	2.750	3.020	0.196	2.810	149
ODW-2875X1T5100N	2.875	3.145	0.196	2.935	151
ODW-3000X1T5100N	3.000	3.270	0.196	3.060	151
ODW-3125X1T5100N	3.125	3.395	0.196	3.185	152
ODW-3250X1T5100N	3.250	3.520	0.196	3.310	152
ODW-3375X1T5100N	3.375	3.645	0.196	3.435	153
ODW-3500X1T5100N	3.500	3.770	0.196	3.560	153
ODW-3625X1T5100N	3.625	3.985	0.196	3.685	154
ODW-3750X1T5100N	3.750	4.020	0.196	3.810	154
ODW-3875X1T5100N	3.875	4.145	0.196	3.935	155
ODW-4000X1T5100N	4.000	4.270	0.196	4.060	155
ODW-4125X1T5100N	4.125	4.395	0.196	4.185	156



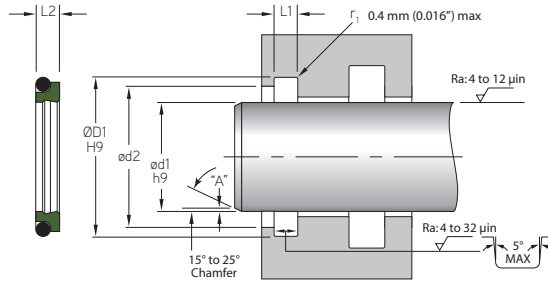
MFP PART NUMBER	ROD APPLICATION				O-Ring Dash #
	ød1	ØD1	L1	ød2	
TOLERANCE	h9	H9	+0.008/-0.000	+0.006/-0.000	
ODW-4250X1T5100N	4.250	4.520	0.196	4.310	156
ODW-4375X1T5100N	4.375	4.645	0.196	4.435	157
ODW-4500X1T5100N	4.500	4.770	0.196	4.560	157
ODW-4625X1T5100N	4.625	4.895	0.196	4.685	158
TOLERANCE	h9	H9	+0.008/-0.000	+0.008/-0.000	
ODW-4750X1T5100N	4.750	5.020	0.196	4.810	158
ODW-4875X1T5100N	4.875	5.145	0.196	4.935	159
ODW-5000X1T5100N	5.000	5.270	0.196	5.060	159
ODW-5125X1T5100N	5.125	5.395	0.196	5.185	160
ODW-5250X1T5100N	5.250	5.520	0.196	5.310	160
ODW-5375X1T5100N	5.375	5.645	0.196	5.435	161
ODW-5500X1T5100N	5.500	5.770	0.196	5.560	161
ODW-5625X1T5100N	5.625	5.895	0.196	5.685	162
ODW-5750X1T5100N	5.750	6.020	0.196	5.810	162
ODW-6000X1T5100N	6.000	6.270	0.196	6.060	163
ODW-6000X2T5100N	6.000	6.344	0.236	6.060	258
ODW-6250X2T5100N	6.250	6.594	0.236	6.310	259
ODW-6500X2T5100N	6.500	6.844	0.236	6.560	260
ODW-6750X2T5100N	6.750	7.094	0.236	6.810	261
ODW-7000X2T5100N	7.000	7.344	0.236	7.060	262
TOLERANCE	h9	H9	+0.008/-0.000	+0.010/-0.000	
ODW-7250X2T5100N	7.250	7.594	0.266	7.310	263
ODW-7500X2T5100N	7.500	7.844	0.236	7.560	264
ODW-7750X2T5100N	7.750	8.094	0.236	7.810	265
ODW-8000X2T5100N	8.000	8.344	0.236	8.060	266
ODW-8250X2T5100N	8.250	8.594	0.236	8.310	267
ODW-8500X2T5100N	8.500	8.844	0.236	8.560	268
ODW-8750X2T5100N	8.750	9.094	0.236	8.810	269
ODW-9000X2T5100N	9.000	9.344	0.236	9.060	270
ODW-9250X2T5100N	9.250	9.594	0.236	9.310	271
ODW-9500X2T5100N	9.500	9.844	0.236	9.560	272
ODW-9750X2T5100N	9.750	10.094	0.236	9.810	273
ODW-10000X2T5100N	10.000	10.344	0.236	10.060	274
ODW-10000X3T5100N	10.000	10.480	0.332	10.080	377
ODW-10500X3T5100N	10.500	10.980	0.332	10.580	378



ODW Style Rod Wiper

A product of MFP Seals.

MFPSEALS
www.mfpseals.com



ODW STYLE

ROD WIPERS

MFP PART NUMBER	ROD APPLICATION				
	ød1	ØD1	L1	ød2	O-Ring Dash #
TOLERANCE	h9	H9	+0.008/-0.000	+0.010/-0.000	
ODW-11000X3T5100N	11.000	11.480	0.332	11.080	379
ODW-11500X3T5100N	11.500	11.980	0.332	11.580	380
ODW-12000X3T5100N	12.000	12.480	0.332	12.080	381
TOLERANCE	h9	H9	+0.008/-0.000	+0.012/-0.000	
ODW-12500X3T5100N	12.500	12.980	0.332	12.580	381
ODW-13000X3T5100N	13.000	13.480	0.332	13.080	382
ODW-13500X3T5100N	13.500	13.980	0.332	13.580	382
ODW-14000X3T5100N	14.000	14.480	0.332	14.080	383
ODW-14500X3T5100N	14.500	14.980	0.332	14.580	383
ODW-15000X3T5100N	15.000	15.480	0.332	15.080	384
ODW-15500X3T5100N	15.500	15.980	0.332	15.580	384
ODW-16000X3T5100N	16.000	16.480	0.332	16.080	385
ODW-16500X3T5100N	16.500	16.980	0.332	16.580	385
ODW-17000X3T5100N	17.000	17.480	0.332	17.080	386