



# K Style Rod Wiper

A product of MFP Seals.

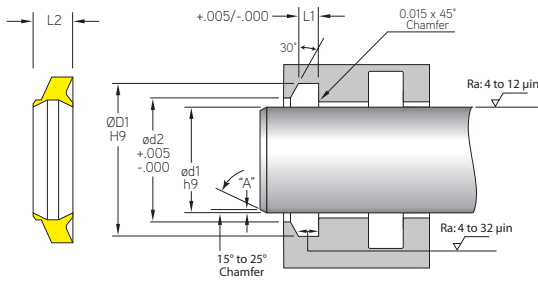
**K STYLE**

## K STYLE ROD WIPER

MFP Seals' K Style wipers are a one piece snap-in type rod wiper designed for light duty use in mobile cylinders with an angled retainer. The K Style rod wipers feature a wiper/scrapper lip as well as a sealing lip for secondary sealing of the system (Secondary U-Cup).



The standard compound for this seal is U2145.  
It is also available in U2150, U2151, U2162, U4150 and H2155.

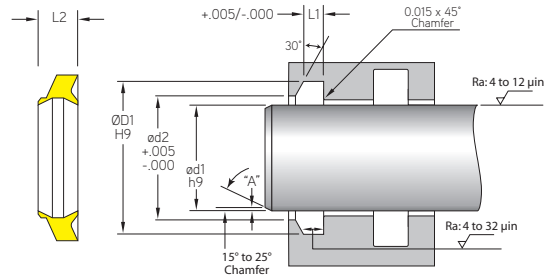


**MFP PART NUMBER**  
**K-1375U2145**  
SEAL TYPE    ød1    COMPOUND

**Max. Velocity: 0.5 m/s (< 1.6 ft./s)**

ROD WIPERS

MFP PART NUMBER	ROD APPLICATION				
	ød1	ØD1	L1	ød2	L2
<b>TOLERANCE</b>	h9	H9	+0.005/-0.000	+0.005/-0.000	
K-0500	0.500	0.760	0.155	0.625	0.315
K-0625	0.625	0.885	0.155	0.750	0.315
K-0750	0.750	1.135	0.195	0.832	0.366
K-0875	0.875	1.260	0.195	0.957	0.366
K-1000	1.000	1.385	0.195	1.082	0.366
K-1187	1.187	1.572	0.195	1.269	0.366
K-1250	1.250	1.635	0.195	1.332	0.366
K-1375	1.375	1.760	0.195	1.457	0.366
K-1500	1.500	1.885	0.195	1.582	0.366
K-1625	1.625	2.010	0.195	1.707	0.366
K-1750	1.750	2.135	0.195	1.832	0.366
K-1875	1.875	2.260	0.195	1.957	0.366
K-2000	2.000	2.385	0.195	2.082	0.366
K-2125	2.125	2.510	0.195	2.207	0.366
K-2250	2.250	2.635	0.195	2.332	0.366
K-2251	2.250	2.760	0.255	2.407	0.483
K-2500	2.500	2.885	0.195	2.582	0.366
K-2501	2.500	3.010	0.255	2.657	0.483
K-2750	2.750	3.260	0.255	2.907	0.483
K-3000	3.000	3.385	0.195	3.082	0.366



**K STYLE**

MFP PART NUMBER	ROD APPLICATION				
	ød1	ØD1	L1	ød2	L2
TOLERANCE	h9	H9	+0.005/-0.000	+0.005/-0.000	
K-3001	3.000	3.510	0.255	3.157	0.483
K-3250	3.250	3.760	0.255	3.407	0.483
K-3500	3.500	3.885	0.195	3.582	0.366
K-3501	3.500	4.010	0.255	3.657	0.483
K-3625	3.625	4.135	0.255	3.782	0.483
K-3750	3.750	4.260	0.255	3.907	0.483
K-4000	4.000	4.510	0.255	4.157	0.483
K-4250	4.250	4.760	0.255	4.407	0.483
K-4500	4.500	5.010	0.255	4.657	0.483
K-4750	4.750	5.260	0.255	4.907	0.483
K-5000	5.000	5.510	0.255	5.157	0.483
K-6000	6.000	6.510	0.255	6.157	0.483
K-6500	6.500	7.010	0.255	6.657	0.483
K-7000	7.000	7.510	0.255	7.157	0.483
K-8000	8.000	8.510	0.255	8.157	0.483
K-8125	8.125	8.635	0.255	8.282	0.483
K-9125	9.125	9.635	0.255	9.282	0.483
K-9375	9.375	9.885	0.255	9.532	0.483

**ROD WIPERS**