



**D ROD WIPER**

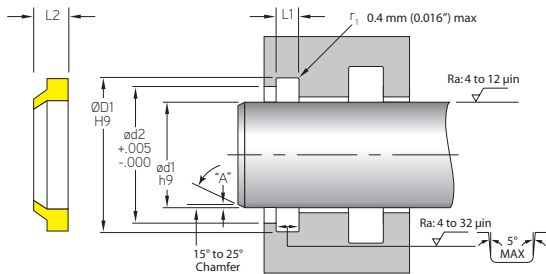
MFP Seals' D wipers are designed for use in light to medium duty hydraulic & pneumatic applications. MFP's D wiper offers a slotted heel to eliminate the possibility of pressure traps between the rod seal and wiper.



*The standard compound for this seal is U2145.  
It is also available in U2150, U2151, U2162, U4150 and H2155.*

*For compound descriptions and temperature ranges, please refer to pages 26-37.*

**D  
STYLE**



**MFP PART NUMBER**  
**D-0250U2145**  
SEAL TYPE    DASH #    COMPOUND

**Max. Velocity: 0.5 m/s (< 1.6 ft./s)**

MFP PART NUMBER	ROD APPLICATION				
	ød1	ØD1	L1	ød2	L2
<b>TOLERANCE</b>	h9	H9	+0.004/-0.000	+0.005/-0.000	
D-0250	0.250	0.497	0.124	0.410	0.210
D-0312	0.312	0.560	0.124	0.475	0.210
D-0375	0.375	0.622	0.124	0.535	0.210
D-0437	0.437	0.685	0.124	0.600	0.210
D-0500	0.500	0.747	0.124	0.660	0.210
D-0562	0.562	0.810	0.124	0.725	0.210
D-0625	0.625	0.872	0.124	0.785	0.210
D-0687	0.687	0.935	0.124	0.850	0.210
D-0750	0.750	1.122	0.187	0.995	0.305
D-0812	0.812	1.185	0.187	1.060	0.305
D-0875	0.875	1.247	0.187	1.120	0.305
D-0937	0.937	1.310	0.187	1.185	0.305
D-1000	1.000	1.372	0.187	1.245	0.305
D-1062	1.062	1.435	0.187	1.310	0.305
D-1125	1.125	1.497	0.187	1.370	0.305
D-1187	1.187	1.560	0.187	1.435	0.305
D-1250	1.250	1.622	0.187	1.495	0.305
D-1312	1.312	1.687	0.187	1.560	0.305
D-1375	1.375	1.747	0.187	1.620	0.305
D-1437	1.437	1.810	0.187	1.685	0.305
D-1500	1.500	1.872	0.187	1.745	0.305
D-1625	1.625	1.997	0.187	1.870	0.305
D-1687	1.687	2.059	0.187	1.932	0.305

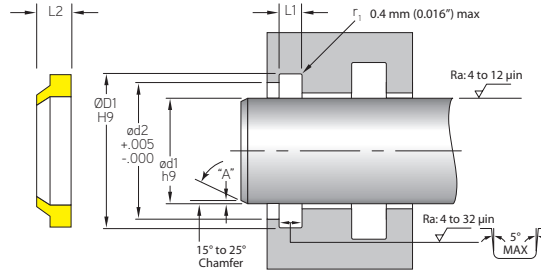
**ROD  
WIPERS**



# D Style Rod Wiper

A product of MFP Seals.

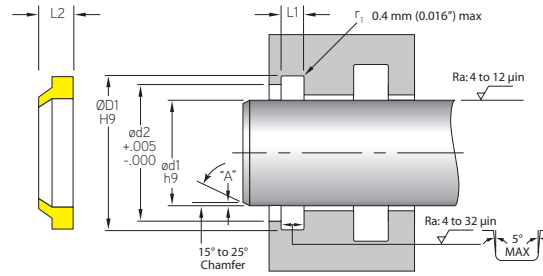
**MFPSEALS**  
www.mfpseals.com



**D STYLE**

**ROD WIPERS**

MFP PART NUMBER	ROD APPLICATION				
	ød1	ØD1	L1	ød2	L2
TOLERANCE	h9	H9	+0.003/-0.003	+0.005/-0.000	
D-1750	1.750	2.122	0.187	1.995	0.305
D-1875	1.875	2.247	0.187	2.120	0.305
D-2000	2.000	2.497	0.249	2.327	0.395
D-2125	2.125	2.622	0.249	2.452	0.395
D-2187	2.187	2.685	0.249	2.515	0.395
D-2250	2.250	2.747	0.249	2.577	0.395
D-2375	2.375	2.872	0.249	2.702	0.395
D-2500	2.500	2.997	0.249	2.827	0.395
D-2562	2.562	3.060	0.249	2.890	0.395
D-2625	2.625	3.122	0.249	2.952	0.395
D-2750	2.750	3.247	0.249	3.077	0.395
D-2875	2.875	3.372	0.249	3.202	0.395
D-3000	3.000	3.497	0.249	3.327	0.395
D-3125	3.125	3.622	0.249	3.452	0.395
D-3250	3.250	3.747	0.249	3.577	0.395
D-3375	3.375	3.872	0.249	3.702	0.395
D-3500	3.500	3.997	0.249	3.827	0.395
D-3625	3.625	4.122	0.249	3.952	0.395
D-3750	3.750	4.247	0.249	4.077	0.395
D-3875	3.875	4.372	0.249	4.202	0.395
D-4000	4.000	4.497	0.249	4.327	0.395
D-4125	4.125	4.622	0.249	4.452	0.395
D-4250	4.250	4.747	0.249	4.577	0.395
D-4375	4.375	4.872	0.249	4.702	0.395
D-4500	4.500	5.247	0.374	4.993	0.585
D-4625	4.625	5.372	0.374	5.118	0.585
D-4750	4.750	5.497	0.374	5.243	0.585
D-4875	4.875	5.622	0.374	5.368	0.585
D-5000	5.000	5.747	0.374	5.493	0.585
D-5250	5.250	5.997	0.374	5.743	0.585
D-5375	5.375	6.122	0.374	5.868	0.585
D-5500	5.500	6.247	0.374	5.993	0.585
D-5625	5.625	6.372	0.374	6.118	0.585
D-5750	5.750	6.497	0.374	6.243	0.585
D-5875	5.875	6.622	0.374	6.368	0.585



**D STYLE**

MFP PART NUMBER	ROD APPLICATION				
	ød1	ØD1	L1	ød2	L2
TOLERANCE	h9	H9	+0.003/-0.003	+0.005/-0.000	
D-6000	6.000	6.747	0.374	6.493	0.585
D-6250	6.250	6.997	0.374	6.743	0.585
D-6375	6.375	7.122	0.374	6.868	0.585
D-6500	6.500	7.247	0.374	6.993	0.585
D-6750	6.750	7.497	0.374	7.243	0.585
D-6875	6.875	7.622	0.374	7.368	0.585
D-7000	7.000	7.747	0.374	7.493	0.585
D-7250	7.250	7.997	0.374	7.743	0.585
D-7500	7.500	8.247	0.374	7.993	0.585
D-7750	7.750	8.497	0.374	8.243	0.585
D-8000	8.000	8.747	0.374	8.493	0.585
D-8250	8.250	8.997	0.374	8.743	0.585
D-8500	8.500	9.247	0.374	8.993	0.585
D-8750	8.750	9.497	0.374	9.243	0.585
D-9000	9.000	9.747	0.374	9.493	0.585
D-9250	9.250	9.997	0.374	9.743	0.585

ROD WIPERS