



AN6226 - SYMMETRICAL U-CUP

Homogeneous Rubber U-Cups require back-up rings if system pressures exceed 500 PSI. Square section seal, height and C/S are the same.



AN 6226

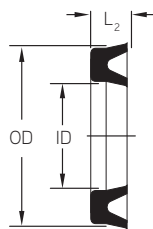
MFP PART NUMBER

6226-01V7100

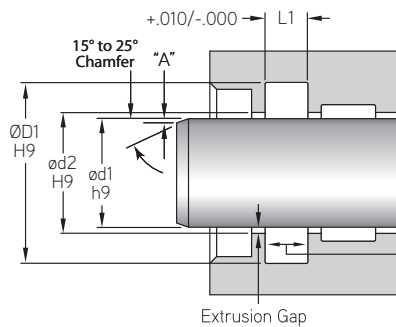
SEAL TYPE COMPOUND
AS568D DASH #

This seal is available in N6001 and V7100.

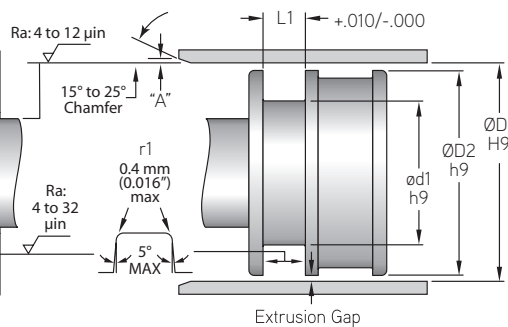
PROFILE



ROD APPLICATION



PISTON APPLICATION



Pressure:

Pneumatic: 17 bar (250 psi) - Hydraulic: 55 bar (800 psi)

Max. Velocity:

Pneumatic: 1.0 m/s (3 ft/s) - Hydraulic: 0.5 m/s (1.5 ft/s)

MFP PART NUMBER	ROD OR PISTON APPLICATION					
	ød1	ød2	ØD1	ØD2	L2	L1
TOLERANCE	h9	H9	H9	h9		+010/-000
6226-01	0.125	0.126	0.500	0.498	0.187	0.218
6226-02	0.187	0.188	0.562	0.560	0.187	0.218
6226-03	0.250	0.251	0.625	0.623	0.187	0.218
6226-04	0.312	0.313	0.687	0.685	0.187	0.218
6226-05	0.375	0.376	0.750	0.748	0.187	0.218
6226-06	0.437	0.438	0.812	0.810	0.187	0.218
6226-07	0.500	0.501	0.875	0.873	0.187	0.218
6226-08	0.250	0.251	0.750	0.748	0.250	0.281
6226-09	0.312	0.313	0.812	0.810	0.250	0.281
6226-10	0.375	0.376	0.875	0.873	0.250	0.281
6226-11	0.437	0.438	0.937	0.935	0.250	0.281
6226-12	0.500	0.501	1.000	0.998	0.250	0.281
6226-13	0.562	0.563	1.063	1.061	0.250	0.281
6226-14	0.625	0.626	1.125	1.123	0.250	0.281
6226-15	0.687	0.688	1.188	1.186	0.250	0.281
6226-16	0.750	0.751	1.250	1.248	0.250	0.281

U-CUP SYMMETRICAL



AN6226 - Symmetrical U-Cup

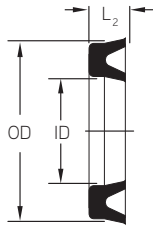
A product of MFP Seals.

MFPSEALS

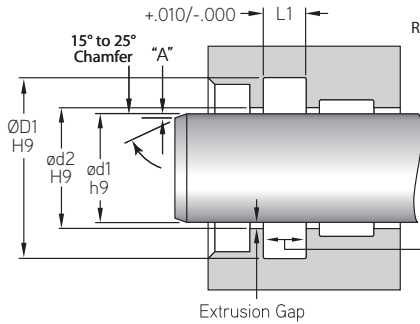
www.mfpseals.com

AN 6226

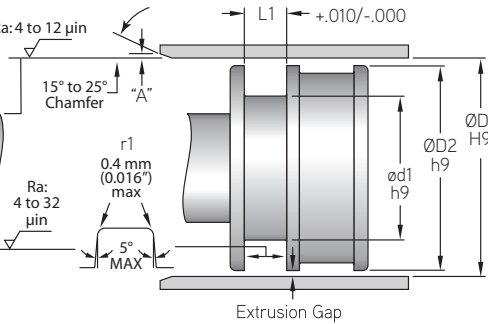
PROFILE



ROD APPLICATION

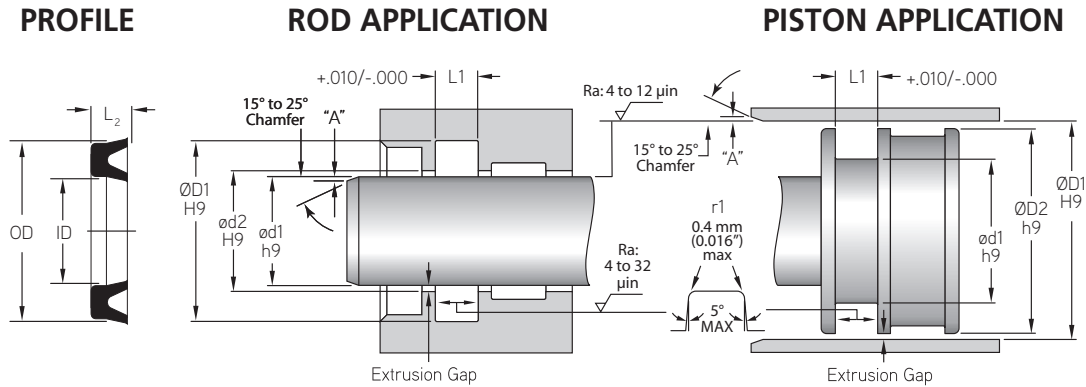


PISTON APPLICATION



U-CUP SYMMETRICAL

MFP PART NUMBER	ROD OR PISTON APPLICATION					
	Ød1	Ød2	ØD1	ØD2	L2	L1
TOLERANCE	h9	H9	H9	h9		+0.010/-0.000
6226-17	0.812	0.813	1.313	1.311	0.250	0.281
6226-18	0.875	0.876	1.375	1.373	0.250	0.281
6226-19	0.937	0.938	1.438	1.436	0.250	0.281
6226-20	1.000	1.001	1.500	1.498	0.250	0.281
6226-21	1.167	1.168	1.562	1.560	0.250	0.281
6226-22	1.125	1.126	1.625	1.623	0.250	0.281
6226-23	1.188	1.189	1.687	1.685	0.250	0.281
6226-24	1.250	1.251	1.750	1.748	0.250	0.281
6226-25	1.250	1.251	1.875	1.873	0.312	0.344
6226-26	1.375	1.376	2.000	1.998	0.312	0.344
6226-27	1.500	1.501	2.125	2.123	0.312	0.344
6226-28	1.625	1.626	2.250	2.248	0.312	0.344
6226-29	1.750	1.751	2.375	2.373	0.312	0.344
6226-30	1.875	1.876	2.500	2.498	0.312	0.344
6226-31	2.000	2.001	2.625	2.623	0.312	0.344
6226-32	2.125	2.126	2.750	2.748	0.312	0.344
6226-33	2.250	2.251	2.875	2.873	0.312	0.344
6226-34	2.375	2.376	3.000	2.998	0.312	0.344
6226-35	2.500	2.501	3.125	3.123	0.312	0.344
6226-36	2.500	2.501	3.250	3.248	0.375	0.406
6226-37	2.625	2.626	3.375	3.373	0.375	0.406
6226-38	2.750	2.751	3.500	3.498	0.375	0.406
6226-39	2.875	2.876	3.625	3.623	0.375	0.406
6226-40	3.000	3.001	3.750	3.748	0.375	0.406
6226-41	0.125	0.126	0.375	0.373	0.125	0.156
6226-42	0.187	0.188	0.437	0.435	0.125	0.156
6226-43	0.250	0.251	0.500	0.498	0.125	0.156
6226-44	0.312	0.313	0.562	0.560	0.125	0.156
6226-45	0.375	0.376	0.625	0.623	0.125	0.156
6226-46	0.437	0.438	0.687	0.685	0.125	0.156
6226-47	0.500	0.501	0.750	0.748	0.125	0.156
6226-48	0.625	0.626	1.000	0.998	0.187	0.218



AN 6226

MFP PART NUMBER	ROD OR PISTON APPLICATION					
	ød1	ød2	ØD1	ØD2	L2	L1
TOLERANCE	h9	H9	H9	h9		+.010/-0.000
6226-49	0.750	0.751	1.125	1.123	0.187	0.218
6226-50	0.875	0.876	1.250	1.248	0.187	0.218
6226-51	1.000	1.001	1.375	1.373	0.187	0.218
6226-52	1.125	1.126	1.500	1.498	0.187	0.218
6226-53	1.250	1.251	1.625	1.623	0.187	0.218
6226-60	3.250	3.251	4.000	3.998	0.375	0.406
6226-63	3.750	3.751	4.500	4.498	0.375	0.406
6226-65	4.250	4.251	5.000	4.998	0.375	0.406
6226-70	5.125	5.126	6.000	5.998	0.437	0.481
6226-75	6.125	6.126	7.000	6.998	0.437	0.481
6226-80	7.000	7.001	8.000	7.998	0.500	0.550
6226-81	7.500	7.501	8.250	8.248	0.375	0.406
6226-82	8.000	8.001	9.000	8.998	0.500	0.550
6226-85	9.000	9.001	10.000	9.998	0.500	0.550
6226-90	11.000	11.001	12.000	11.998	0.500	0.550
6226-95	13.000	13.001	14.000	13.998	0.500	0.550

U-CUP SYMMETRICAL