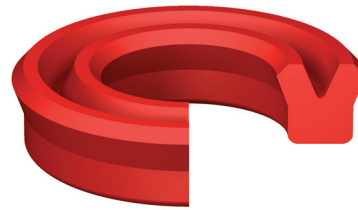




**MSUC - METRIC SYMMETRICAL U-CUP**

MFP Seals' MSUC symmetrical U-Cup is suitable for rod and piston applications. The MSUC features a knife trimmed sealing lip for increased sealing ability and the design was enhanced using finite element analysis giving you the best product on the market. Produced from our U2151 compound the seal offers extremely low compression set and excellent extrusion resistance.



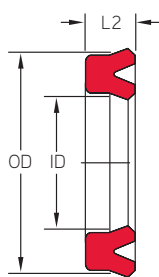
*The standard compound for this seal is U2151.  
It is also available in compounds  
U2145, U2150, U2162, U4150 and H2155.*

**MFP PART NUMBER**

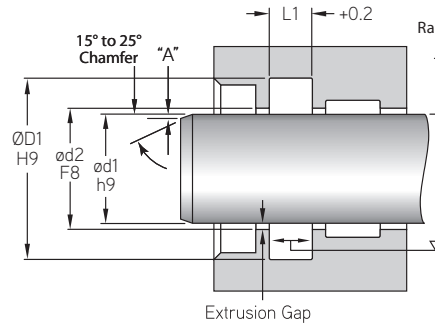
**MSUC-006X012X04.0U2151**

SEAL TYPE      $\phi d1$       $\phi D1$      L2     COMPOUND

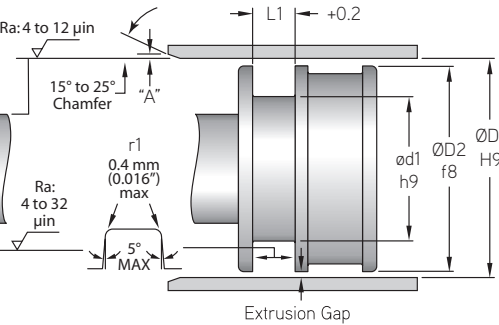
**PROFILE**



**ROD APPLICATION**



**PISTON APPLICATION**



**Pressure:** 400 bar (5,800 psi)     **Max. Velocity:** 0.5 m/s (< 1.6 ft./s)

MFP PART NUMBER	ROD OR PISTON APPLICATION					
	$\phi d1$	$\phi d2$	$\phi D1$	$\phi D2$	L2	L1
<b>TOLERANCE</b>	h9	F8	H9	f8		+0.2
MSUC-006X012X04.0	6	6	12	12	4	4.5
MSUC-006X012X06.0	6	6	12	12	6	7
MSUC-008X014X06.0	8	8	14	14	6	7
MSUC-008X016X06.0	8	8	16	16	6	7
MSUC-008X016X08.0	8	8	16	16	8	9
MSUC-010X015X03.0	10	10	15	15	3	4
MSUC-010X016X04.5	10	10	16	16	4.5	5.5
MSUC-010X018X06.0	10	10	18	18	6	6.6
MSUC-012X019X05.0	12	12	19	19	5	6
MSUC-015X021X04.0	15	15	21	21	4	5
MSUC-016X024X05.0	16	16	24	24	5	5.7
MSUC-018X026X05.0	18	18	26	26	5	5.7
MSUC-018X026X08.0	18	18	26	26	8	9
MSUC-020X026X05.0	20	20	26	26	5	6
MSUC-020X028X04.0	20	20	28	28	4	5
MSUC-020X028X05.0	20	20	28	28	5	5.7
MSUC-020X032X08.0	20	20	32	32	8	9

**MSUC**

METRIC SYMMETRICAL U-CUPS



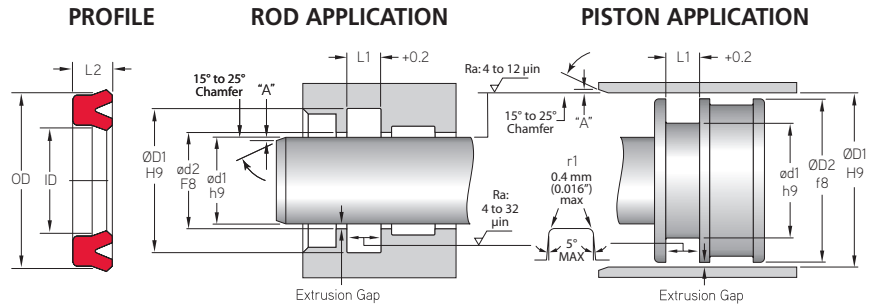
# MSUC - Metric Symmetrical U-Cup

A product of MFP Seals.

**MFPSEALS**

www.mfpseals.com

MSUC



## ROD OR PISTON APPLICATION

MFP PART NUMBER	Ød1	Ød2	ØD1	ØD2	L2	L1
<b>TOLERANCE</b>	h9	F8	H9	f8		+0.2
MSUC-022x030x04.0	22	22	30	30	4	5
MSUC-025x033x05.0	25	25	33	33	5	5.7
MSUC-025x040x10.0	25	25	40	40	10	11
MSUC-028x036x05.0	28	28	36	36	5	6
MSUC-030x040x06.0	30	30	40	40	6	7
MSUC-030x040x07.0	30	30	40	40	7	8
MSUC-030x040x08.0	30	30	40	40	8	9
MSUC-030x040x10.0	30	30	40	40	10	11
MSUC-035x045x06.0	35	35	45	45	6	7
MSUC-035x045x07.0	35	35	45	45	7	8
MSUC-035x045x10.0	35	35	45	45	10	11
MSUC-040x048x06.0	40	40	48	48	6	7
MSUC-040x048x08.0	40	40	48	48	8	9
MSUC-040x050x06.0	40	40	50	50	6	7
MSUC-040x050x07.0	40	40	50	50	7	8
MSUC-040x050x08.0	40	40	50	50	8	9
MSUC-040x050x10.0	40	40	50	50	10	11
MSUC-045x055x06.0	45	45	55	55	6	7
MSUC-045x055x07.0	45	45	55	55	7	8
MSUC-045x055x10.0	45	45	55	55	10	11
MSUC-045x060x10.0	45	45	60	60	10	11
MSUC-050x060x06.0	50	50	60	60	6	7
MSUC-050x060x07.0	50	50	60	60	7	8
MSUC-050x060x08.0	50	50	60	60	8	9
MSUC-052x062x06.0	52	52	62	62	6	7
MSUC-053x063x06.0	53	53	63	63	6	7
MSUC-055x065x06.0	55	55	65	65	6	7
MSUC-060x070x06.0	60	60	70	70	6	7
MSUC-060x072x10.0	60	60	72	72	10	11
MSUC-065x075x06.0	65	65	75	75	6	7
MSUC-070x080x06.0	70	70	80	80	6	7
MSUC-070x090x12.0	70	70	90	90	12	13
MSUC-075x085x06.0	75	75	85	85	6	7
MSUC-080x090x06.0	80	80	90	90	6	7
MSUC-085x100x09.0	85	85	100	100	9	10
MSUC-090x105x09.0	90	90	105	105	9	10
MSUC-090x115x09.0	90	90	115	115	9	10
MSUC-095x110x09.0	95	95	110	110	9	10

METRIC SYMMETRICAL U-CUPS